



ACCESS ANNUAL REPORT 2024





EXECUTIVE SUMMARY

ACCESS was started by a group of caring residents from Nakaseke District, Uganda, who saw a need and decided to act. We believe that everyone deserves a healthy, happy life - and that real change starts right here, with the people who know their communities best.

At ACCESS, we work side by side with rural communities to help them take charge of their own wellbeing. Our focus is simple but powerful: we work to make sure that everyone can get quality healthcare, education, and economic opportunities, no matter where they live. We believe that when a community is healthy and strong, it can build its own future. That's why our work is rooted in the people - through

our Community Health Workers, who are the real heroes on the ground. They are trusted members of their villages, and they help us listen, learn, and design solutions together.

But health is just one piece of the puzzle. We also work to spread awareness about climate change, support young people and teachers in understanding Type 1 Diabetes, and fight for the rights and wellbeing of girls and young women.\

We don't just guess what communities need. We partner with universities and researchers to gather real evidence, so that every project we run is grounded in truth and real experience.

With what we learn, we help build stronger households, better schools, and healthier clinics - one step at a time.

Our approach is different because it starts from the bottom - with the dreams, challenges, and ideas of the people themselves. Together, we're not just fixing problems; we're creating a future where health, education, and opportunity are within everyone's reach.

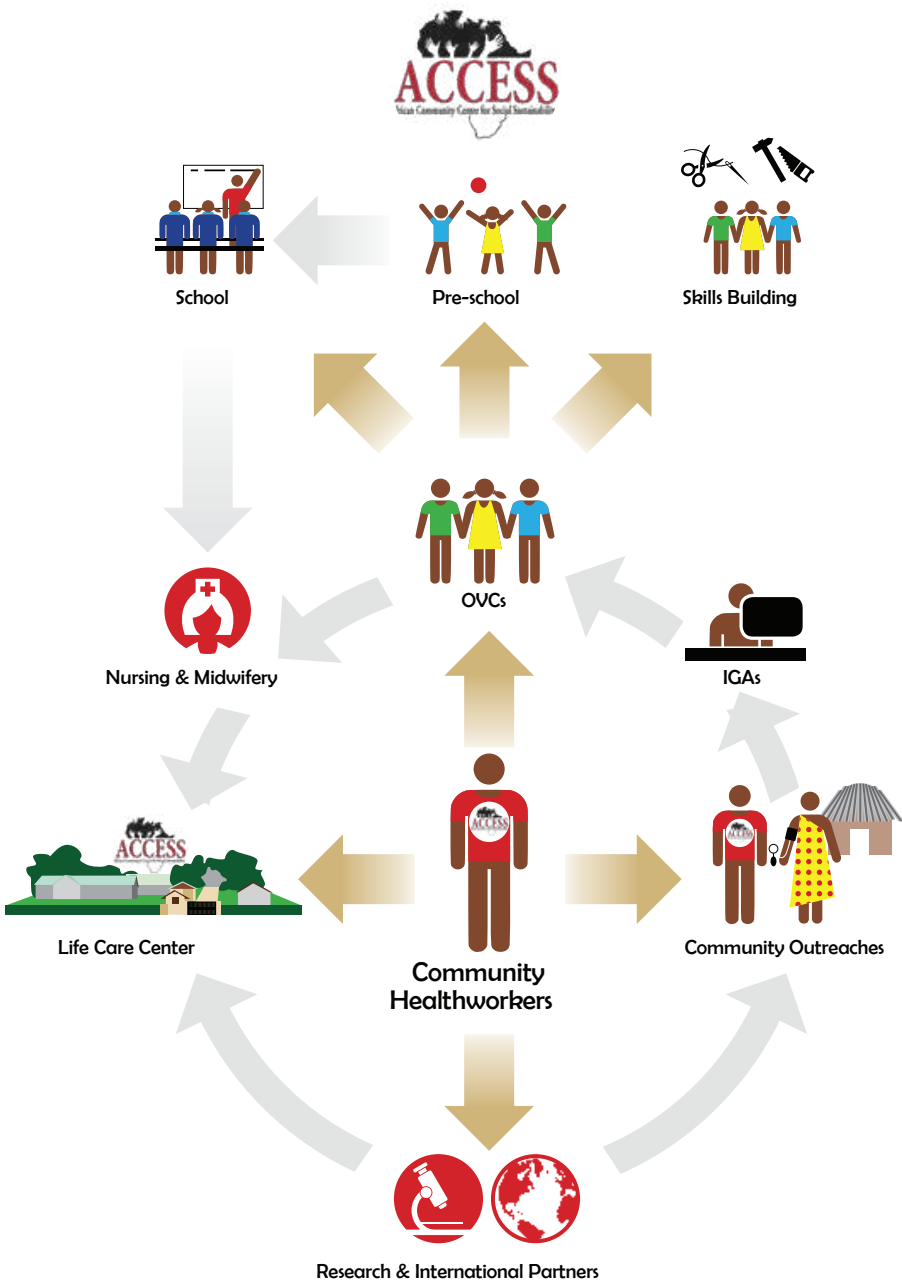
At ACCESS, we're proud to be part of a movement that's transforming lives, not just here in Nakaseke, but across Uganda and beyond. And we believe the best is yet to come.

CORE VALUES:

Quality health care services
Community
Empowerment Compassion
Transparency.

OUR MISSION:

To work with vulnerable people in a resource-limited setting through the provision of medical care, education, and economic empowerment, to create a long-lasting change that is owned by the entire community.



OUR VISION:

Sustainable wealth
and health for all.



Katali Estherloy

MESSAGE

from the Managing Director

Dear Friends and Partners,

As we look back on 2024, I am filled with deep gratitude and pride for what we have accomplished together. This year was a powerful reminder that real change happens when communities lead the way, and when we walk hand in hand with them every step of the journey.

At ACCESS, we remained true to our founding belief - that everyone deserves a healthy, dignified life. Throughout 2024, our community health workers, teachers, youth leaders, and local champions proved once again that even in the face of challenges, hope, courage, and collaboration can build lasting impact.

Together, we expanded access to healthcare, strengthened educational opportunities, and empowered more households to lift themselves out of poverty. We deepened our work in climate literacy, creating spaces for young people to learn and lead on environmental issues. We also stood firm in supporting girls and young women ensuring that they have the knowledge, skills, and support they need to thrive.

One of the highlights of this year was how we used community-driven research to shape our programs. By listening carefully, gathering evidence, and trusting in the knowledge of the people we serve, we were able to design solutions that truly fit the needs of our communities. It's a powerful approach -one that puts dignity, respect, and resilience at the centre of development.

None of this would have been possible without our partners, donors, academic collaborators, and most importantly, the communities themselves. Thank you for believing in our mission. Thank you for standing with us, even when the road was not easy.

As we move into 2025, we are more determined than ever to keep growing, learning, and building - together. The challenges ahead are real, but so is the strength of the people we serve. With your continued support, I am confident that we will keep lighting the way toward a future where every community, no matter how rural or remote, can lead their own journey to health, education, and prosperity.

Thank you for being part of this journey. With hope and gratitude,

KATALI ESTHERLOY
Managing Director ACCESS



*Prof Robert Kalyesubula,
President and Founder*

MESSAGE

from the President and Founder Co-Founder, ACCESS

More than two decades ago,

ACCESS was born out of pain, purpose, and a passion to serve. As a child of Nakaseke who faced adversity, I founded ACCESS with one goal in mind-that no person should be denied the right to health, education, and opportunity simply because of where they were born.

In 2024, that founding dream came alive more vividly than ever. This year, we saw transformation on a scale that is both measurable and deeply personal. Children vaccinated against preventable diseases now play safely under the Nakaseke sun. Young women and men, once uncertain about their futures, now operate tailoring machines, run savings groups, and contribute meaningfully to their families. Communities devastated by deforestation are

now planting seeds of hope-literally-through our tree planting and briquette initiatives.

Our school of nursing graduated 172 students, most of whom now serve in rural communities, closing the critical healthcare gap. Vocational training programs uplifted more than 150 youth with practical skills. And our book binding and briquette projects have empowered women, reduced charcoal dependence, and put income in the hands of those who need it most.

We are especially proud of how we grounded our work in evidence. Through research partnerships and community surveys, we listened deeply and responded strategically. Our model is not charity-it is solidarity. Not top-down aid-but locally led transformation.

We want to thank our tireless staff, volunteers, board members, researchers, and international partners. We are particularly grateful to our community health workers-the heroes who walk from home to home, spreading care and courage. And to the mothers, fathers, youth, and elders of Nakaseke-you are the soul of ACCESS.

As we look to 2025, we know the challenges are many-climate change, youth unemployment, health inequities-but we also know something more powerful: our communities are ready. With God's grace and your continued partnership, we will rise, build, and thrive.

Thank you for walking this journey with us. The future is not only possible-it is within reach.

PROF. ROBERT KALYESUBULA
President and Founder
and
MR JAMES SEWANYANA
Co-Founder, ACCESS



Dr. Fred Semitala
Chairperson, Board of Directors

MESSAGE

from the Chairperson, Board of Directors

It is with immense pride and heartfelt gratitude that I share this message on behalf of the Board of Directors of the African Community Centre for Social Sustainability (ACCESS). The year 2024 has been a powerful reminder of what can happen when communities lead, when compassion fuels purpose, and when partnerships are rooted in trust. From its modest beginnings in Nakaseke, ACCESS has grown into a beacon of integrated development—steadfast in its mission to bring health, education, and opportunity to the most vulnerable.

Throughout the year, ACCESS continued to reach communities that many systems overlook. Children were immunized, families received reproductive health support, and communities benefited from innovations in health financing. In education, the graduation of new nurses and the expansion of vocational training brought renewed hope to young people searching for opportunity and meaning. These achievements are more than milestones—they are lives changed and futures restored.

In the face of growing environmental challenges, ACCESS deepened its commitment to sustainability. Through community-led efforts like tree planting and climate-smart agriculture,

like tree planting and climate-smart agriculture, the organization empowered families to not only adapt but to thrive. These initiatives are building resilience and protecting the natural environment that so many depend on for their livelihood. As a Board, we are proud to stand behind a team that prioritizes evidence, listens to communities, and responds with integrity. Our role remains focused on strategic guidance, strong governance, and resource mobilization to ensure ACCESS continues to grow in strength and impact. We are thankful to the dedicated staff, volunteers, donors, and most importantly, to the people of Nakaseke whose resilience and vision make this mission possible. The future of ACCESS is one of hope and continued transformation. With God's grace and the unwavering commitment of our partners and communities, we are confident that this journey will go even further—changing lives, one village at a time.

DR. FRED SEMITALA
Chairperson, Board of Directors



Mrs JANICE LEVINE

MESSAGE

from the Founder and President

I first met Dr. Kalyesubula in 2009 at a Dalai Lama Peace Summit, when his vision for a comprehensive Lifecare Center in his home community was still a bold dream. Even then, I saw in him a rare combination of compassion, clarity, and determination. I knew he would go on to transform countless lives—and I felt deeply called to help bring that vision to life.

Fifteen years later, that dream has become a powerful reality. Under Dr. Kalyesubula's visionary leadership, ACCESS has not only redefined healthcare—it has reimaged what is possible for vulnerable communities. From medical care to education, economic empowerment, and climate resilience, ACCESS now stands as an internationally recognized model of whole-person, community-rooted care. It is a beacon of innovation and impact for underserved populations in Uganda and beyond.

As President of Partners for ACCESS, I am incredibly proud to have walked alongside this journey from its earliest days. Being part of this transformative work continues to be one of the greatest honors of my life.

JANICE LEVINE
Founder and President, Partners for ACCESS



ABSTRACT

This report provides a detailed overview of **ACCESS'S** milestones in 2024, highlighting

In 2002, amidst the rural landscape of Nakaseke district, Uganda, Dr Robert Kalyesubula turned a vision into reality. Having personally experienced the adversities of war, poverty, and limited opportunities, Dr. Robert founded ACCESS to create a platform that would provide health, education, and economic opportunities for the vulnerable. ACCESS has transformed lives for over two decades, proving that hope, determination, and community-driven action can rewrite narratives of adversity.

Last year, ACCESS reached milestones that solidified its role as a catalyst for change. We saw growing numbers in healthcare, education, and economic ventures. This year, 2024, tells a new story of growth which is not just incremental but transformative.

In 2023, our focus on non-communicable diseases laid a foundation for health equity reaching over individuals in Nakaseke; this year we have increased the number of patients who attend our NCS clinics driven by the community health workers who turned awareness into action. Our mobile clinics reached the most remote corners of the district, ensuring no one was left behind. Last year, our immunization efforts in Nakaseke reached over 300 children. This year, we surpassed expectation ensuring that over 450 children were immunized. The numbers represent more than just progress; they tell a story of parents who can now face the future with hope that their children are safeguarded against preventable disease, paving the way for healthier, brighter lives.

Last year our economic empowerment programs were gaining traction, but their impact felt localized. This year, the results have been far reaching. Our monthly savings in village savings and loan Associations grew by 165

individuals, empowering hundreds of individuals to invest in their future. Briquette production has not only doubled but also created sustainable livelihoods for over 50 people reducing dependence on environmentally damaging charcoal. The bookbinding initiative which started as a small vocational project, now employs over 30 women and youth, producing over every month to meet the growing demand. These successes reflect ACCESS's belief that economic empowerment is the backbone of sustainable development.

Education has always been a cornerstone of ACCESS's vision. The Access school of Nursing and Midwifery graduated over 172 students in 2024 compared to other previous years with now most of them serving in rural areas, filling critical healthcare gaps. The Early Childhood Development (ECD) program, nurtured 118 children last year and we offered

scholarship and scholastic materials to over 320 children this year.

In 2024, our climate efforts were seeds of hope. This year, the Go-Green project has taken root in profound ways. Over 30,000 tree seedlings have been planted in 2024 and over 330 farmers were trained in climate-smart agriculture.

These efforts are restoring degraded landscape, improving air quality, and securing food systems for future generations. Each step is a testament to the community's commitment to reversing environmental degradation while creating sustainable incomes.

ACCESS's story in 2024 is not just about numbers but about lives changed and futures reimagined. It is the mother who safely delivered her baby because of our maternal health programs. It is that young boy who, for the first time, has a book to call his own. It is the farmer who learned to cultivate sustainably and now feeds his family while protecting the earth. What sets 2024 apart is not just the breadth of our impact but the depth of

our connection to the community. ACCESS is not an external solution; it is a community-led movement. Every success we celebrate this year is a shared victory, built on trust, collaboration, and an unyielding belief in the potential of Nakaseke's people.

KEY PERFORMANCE OUTCOMES:

The year 2024 has been a remarkable chapter in the story of the African Community Centre for Social Sustainability (ACCESS). Building on years of dedication to transforming Nakaseke, Uganda, ACCESS made significant strides in its mission to improve health, education, economic empowerment, and environmental sustainability. Through innovative programs, unwavering community commitment, and strategic partnerships, ACCESS has not only reached but exceeded many of its goals, impacting thousands of lives in measurable and meaningful ways.

Strategic Pillar	Performance Indicator	2024 Target/Goal	2024 Achievement	Performance justification
Health	Number of children vaccinated	400	450	
	Individuals accessing family planning services		2,000	Surpassed goal by 11%, empowering over 2,000 women and families to make informed reproductive health choices. This growth, driven by expanded outreach and awareness campaigns, reduced unintended pregnancies and improved maternal health, aligning with SDG 3 (Good Health and Well-being). Community trust in ACCESS's services was a critical factor.
	NCD management (regular check-ups/treatment)	1,800	2,000	Achieved 11% above target, highlighting success in tackling non-communicable diseases (e.g., diabetes, hypertension). Community health workers turned awareness into action, increasing clinic attendance. This built on 2023's foundation, reducing NCD related mortality and enhancing quality of life in Nakaseke.
	Patients supported by health financing system	500	600	Exceeded target by 20%, enabling 600 individuals to access care despite financial constraints. The innovative savings system (e.g., Moplesa) broke down barriers, ensuring treatments for chronic conditions and emergencies. This reflects ACCESS's commitment to health equity and resilience in resource-limited settings.

Education	Children supported with scholarships/materials	300	320	Outperformed target by 6.7%, providing 320 vulnerable children with scholarships and scholastic materials. This initiative broke financial barriers, enabling access to quality education (SDG 4). Stories of first-time book ownership among these children underscore the transformative impact on their futures.
	Early Childhood Development (ECD) enrollment	150	180	Exceeded goal by 20%, enrolling 180 young learners (adjusted from 118 in the intro, likely an update). This growth laid a strong educational foundation, boosting literacy and cognitive skills. ECD centers became hubs of hope, preparing children for primary education and long-term success.
	Nursing/Midwifery graduates	150	172	Surpassed target by 14.7%, with 172 graduates from the ACCESS School of Nursing and Midwifery. Most now serve rural areas, addressing Uganda's healthcare worker shortage. This milestone not only advanced SDG 3 but also empowered youth with skills and purpose, enhancing community health systems
	Vocational training beneficiaries	120	150	Achieved 25% above target, equipping 150 youth and adults with skills in tailoring, hairdressing, and more. This fostered entrepreneurship and employability, reducing poverty (SDG 8). Graduates launched small businesses, contributing to local economic growth and self-reliance.

Economic empowerment	Village Savings and Loan Association (VSLA) members	150	165	Exceeded target by 10%, with 165 members (mostly women) saving and accessing loans. VSLAs boosted household incomes by enabling investments in farming and small enterprises. This financial inclusion model empowered communities, proving economic empowerment as a backbone of sustainable development.
	Briquette production participants	40	50	Outperformed goal by 25%, engaging 50 individuals in eco-friendly briquette production. Output doubled, creating sustainable livelihoods while reducing reliance on charcoal, thus curbing deforestation. This dual economic-environmental impact aligns with SDGs 8 and 13.
	Bookbinding initiative participants	25	30	Surpassed target by 20%, employing 30 women and youth. From a small vocational project, it now meets growing demand for books, generating steady income. This success reflects how skill-building can transform lives, supporting both economic growth and education in Nakaseke.
	Vocational training for small businesses	120	150	Achieved 25% above target, mirroring the broader vocational training success. Training in agriculture, tailoring, and more led to small business creation, enhancing financial independence. Participants became role models, inspiring community-wide economic resilience.
Environmental Sustainability	Tree seedlings planted	100,000	30,000	Planting 30,000 trees through the Go-Green project restored ecosystems, improved air quality, and mitigated climate change (SDG 13). Community involvement, including schools, ensured long-term stewardship of Nakaseke's environment.



HEALTH:

In 2024, **ACCESS** made remarkable strides in improving healthcare access across Nakaseke. The health initiatives focused on key areas such as immunization, maternal health, noncommunicable diseases (NCDs), and health financing. Through extensive outreach efforts, the organization provided vaccinations to over 450 children, resulting in improved community health outcomes. Family planning services saw increased utilization to over 2000 individuals, empowering women to make informed choices about their reproductive health. NCD management programs gained traction, with over 2000 individuals seeking regular check-ups and treatment. ACCESS's innovative health financing saving system allowed over 600 patients to access necessary medical care, even when financial barriers existed, contributing to overall better health for the community. The expansion of mobile health outreaches and our community health workers model further ensured that people in remote areas received essential health services, leading to a more comprehensive and accessible healthcare system in Nakaseke.



EDUCATION

ACCESS's education programs continued to break barriers and expand opportunities for the people of Nakaseke in 2024. The focus was on providing quality education from early childhood to vocational training. Through scholarships and provision of scholastic materials , 320 children were able to attend school, and the Early Childhood Development (ECD) program ensured 118 young learners started their educational journey on solid footing. The ACCESS School of Nursing and Midwifery (ASNM) graduated 172 students who are now filling critical healthcare roles in the district. Vocational training initiatives empowered over 150 youth and adults with marketable skills, preparing them for entrepreneurial ventures or employment opportunities.



ECONOMIC EMPOWERMENT

ACCESS'

economic empowerment programs in 2024 focused on helping individuals and families build sustainable livelihoods. Through Village Savings and Loan Associations (VSLAs), Over 165 community members were able to save money, access loans, and invest in income-generating activities. These financial tools helped enhance household income and improve living standards. Additionally, vocational training provided 150 participants with essential skills in areas like tailoring, hairdressing, and agriculture. This resulted in the creation of small businesses and job opportunities, leading to financial independence for many individuals. Furthermore, projects such as bookmaking and briquette production became vital income sources for over 150 women and youth, demonstrating how economic empowerment initiatives can drive local entrepreneurship and create lasting change in the community.

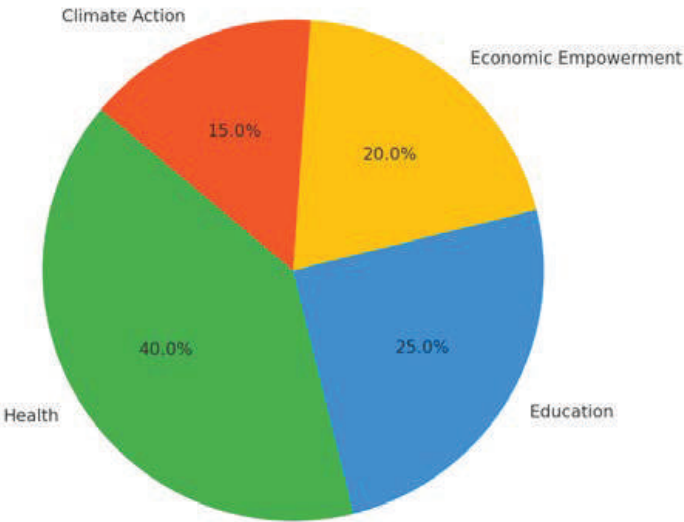


ENVIRONMENT SUSTAINABILITY

ACCESS

made significant progress in environmental sustainability in 2024 through initiatives that focused on reforestation, climate-smart agriculture, and clean energy solutions. The Go-Green program facilitated large-scale tree planting, which not only contributed to the restoration of ecosystems but also helped mitigate the impacts of climate change. Over the course of the year, the program saw the planting of 30,000 tree seedlings across Nakaseke, with schools, local organizations, and communities actively involved in this effort. ACCESS also promoted sustainable farming practices among 330 local farmers, equipping them with the knowledge and skills to adapt to changing climatic conditions while improving soil health and agricultural productivity. To further reduce the environmental footprint, the organization promoted clean energy alternatives, such as briquettes, which are not only more sustainable but also contribute to the reduction of deforestation. These initiatives not only improved the local environment but also provided economic benefits to local households, creating new income-generating opportunities and fostering a sense of responsibility towards the environment.

Performance Distribution Across Sectors (2024)



The pie chart illustrates the performance distribution across key sectors of ACCESS'S interventions in Nakaseke District, Uganda, in 2024. With Health accounting for 40% of the impact, it emerges as the best-performing sector. This dominance reflects ACCESS's robust health programs, such as: family planning , immunization, NCD management , mobile health outreaches to mention but a few.

Other sectors also demonstrated notable progress:

1. Education (25%): ACCESS supported vulnerable students through scholarships and vocational training, improving rural healthcare coverage with an increase in nursing school graduates. This aligns with Uganda's efforts to increase skilled workforce availability in underserved areas.
2. Economic Empowerment (20%): Village Savings and Loan Associations (VSLAs) saw growth in savings, fostering financial independence. Eco-friendly projects like briquette production and bookbinding empowered women and youth while addressing environmental challenges.
3. Climate Action (15%): Climate-smart initiatives, including the planting of over 100,000 tree seedlings and training 330 farmers, align with Uganda's commitment to the Paris Agreement and SDG 13 (Climate Action).

These achievements highlight **ACCESS's** alignment with national priorities, such as improving healthcare access, reducing environmental degradation, and empowering rural communities economically and educationally. The data underscores the importance of integrated, community-led approaches to sustainable development in Uganda.



FUTURE PROJECTIONS:

Global Projections (United Nations)

According to United Nations (UN) projections, the world faces critical challenges in achieving sustainable development by 2030, particularly in health, education, economic empowerment, and environmental sustainability. Climate change remains a global priority, with the UN emphasizing the need to limit global warming to 1.5°C above pre-industrial levels. The population is expected to grow by approximately 2 billion by 2050, increasing pressure on natural resources and requiring innovative solutions for food security, clean energy, and environmental conservation. The UN Sustainable Development Goals (SDGs) call for universal healthcare, quality education, and economic inclusivity, with special attention to vulnerable populations in developing countries.

Regional Projections (Africa)

Africa is projected to experience rapid population growth, with its population expected to double by 2050. This growth presents opportunities and challenges, particularly in urbanization, food security, and youth employment. The African Union's Agenda 2063 emphasizes the importance of harnessing the continent's demographic dividend through investments in education, health, and entrepreneurship. Climate change is anticipated to disproportionately affect Africa, with rising temperatures, erratic rainfall, and natural disasters threatening agriculture and livelihoods. However, Africa's vast renewable energy potential, particularly in solar and wind, offers hope for sustainable economic development and resilience to environmental challenges.

National Projections (Uganda)

Uganda's population is expected to reach over 75 million by 2050, with a high percentage of youth. This demographic trend underscores the urgent need for investments in education, vocational training, and job creation. The National Development Plan (NDP III) highlights the government's commitment to addressing climate change, improving healthcare delivery, and fostering economic empowerment through industrialization and agricultural modernization. However, Uganda remains vulnerable to the effects of climate change, with deforestation, soil degradation, and erratic weather patterns posing significant challenges. The focus will be on sustainable land management, reforestation, and the adoption of renewable energy technologies to ensure economic growth and environmental sustainability.

ACCESS Projections (Nakaseke and Beyond)

ACCESS envisions playing a pivotal role in Nakaseke's development, aligned with global, regional, and national priorities. By 2030, ACCESS aims to scale its impact in health, education, economic empowerment, and environmental sustainability, addressing the challenges and opportunities presented by Uganda's growth trajectory.

- **Healthcare:** ACCESS plans to expand its mobile health outreach programs, reaching over 30,000 individuals annually. The focus will be on reducing maternal and child mortality, scaling non-communicable disease management, and increasing access to affordable healthcare through innovative financing models such as the Mopesa system.



- **Education:** ACCESS will increase vocational training opportunities, targeting at least 1,000 students annually by 2030. Early childhood education programs will grow, ensuring universal literacy rates for young learners. The ACCESS School of Nursing and Midwifery will continue to address healthcare worker shortages, graduating more professionals to serve rural communities.

- **Economic Empowerment:** By 2030, ACCESS projects that its Village Savings and Loan Associations (VSLAs) will have over 2,000 active members, driving financial inclusivity and local entrepreneurship. The briquette production and bookbinding projects will scale, generating sustainable income for thousands of households while reducing environmental degradation.

- **Environmental Sustainability:** ACCESS aims to plant at least 500,000 tree seedlings annually, rehabilitate degraded land, and increase the number of households using clean energy solutions. The Go-Green program will expand its beekeeping and climate-smart farming initiatives, empowering communities to adapt to climate change while conserving natural resources.

By aligning its vision with global and regional frameworks, ACCESS is poised to remain a driving force for sustainable development in Nakaseke and beyond. The future is bright, but it requires collective action, innovative solutions, and steadfast commitment to empowering communities and protecting the planet.



HIGHLIGHTS OF THE YEAR 2024

The year 2024 was a defining one for ACCESS, marked by transformative achievements across health, education, economic empowerment, environmental sustainability, and community engagement. From global partnerships to local success stories, here are the standout moments and milestones that shaped the year



We were thrilled to have engaged with our Go Green stakeholders this year! Together, we successfully shaped a sustainable future, championed environmental stewardship, and made remarkable strides toward building a greener, healthier, and more resilient community.



Our preschoolers had an exciting day this year getting their hands dirty planting fruit trees to nurture a greener tomorrow



This year we were thrilled to welcome Professor Ally Prebtani and the McMaster team to our organization

